



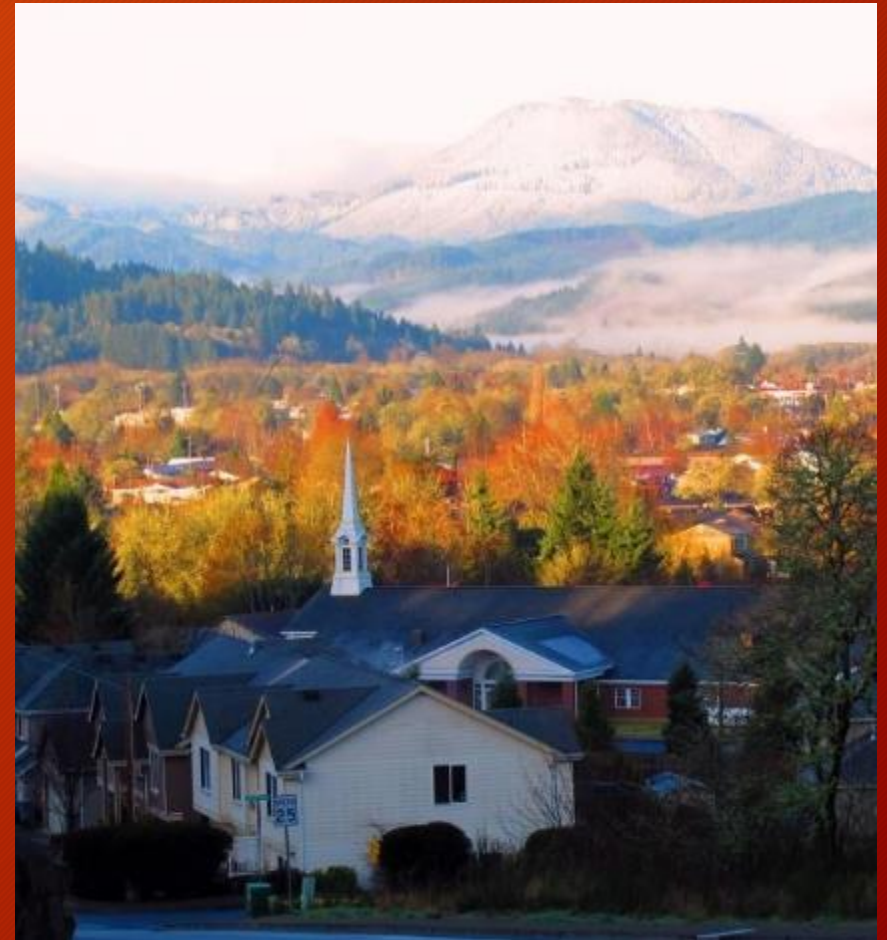
Philomath Fire & Rescue

The preservation of property, through the extinguishment and prevention of fires.
The protection and care of human life through education and treatment.
The development of character through commitment and teamwork.

Who we are and what we do:



- Provide fire and EMS service to 9,000+ residents, over 58 square miles
Philomath, Wren, Inavale
- Provide medical standby at events
Frolic rodeo, football games, wildland certification testing, community events
- Provide fire and life safety education and outreach
Car seat checks, fire prevention education, First Aid/CPR classes



Where?

Partners

Adair

Alsea

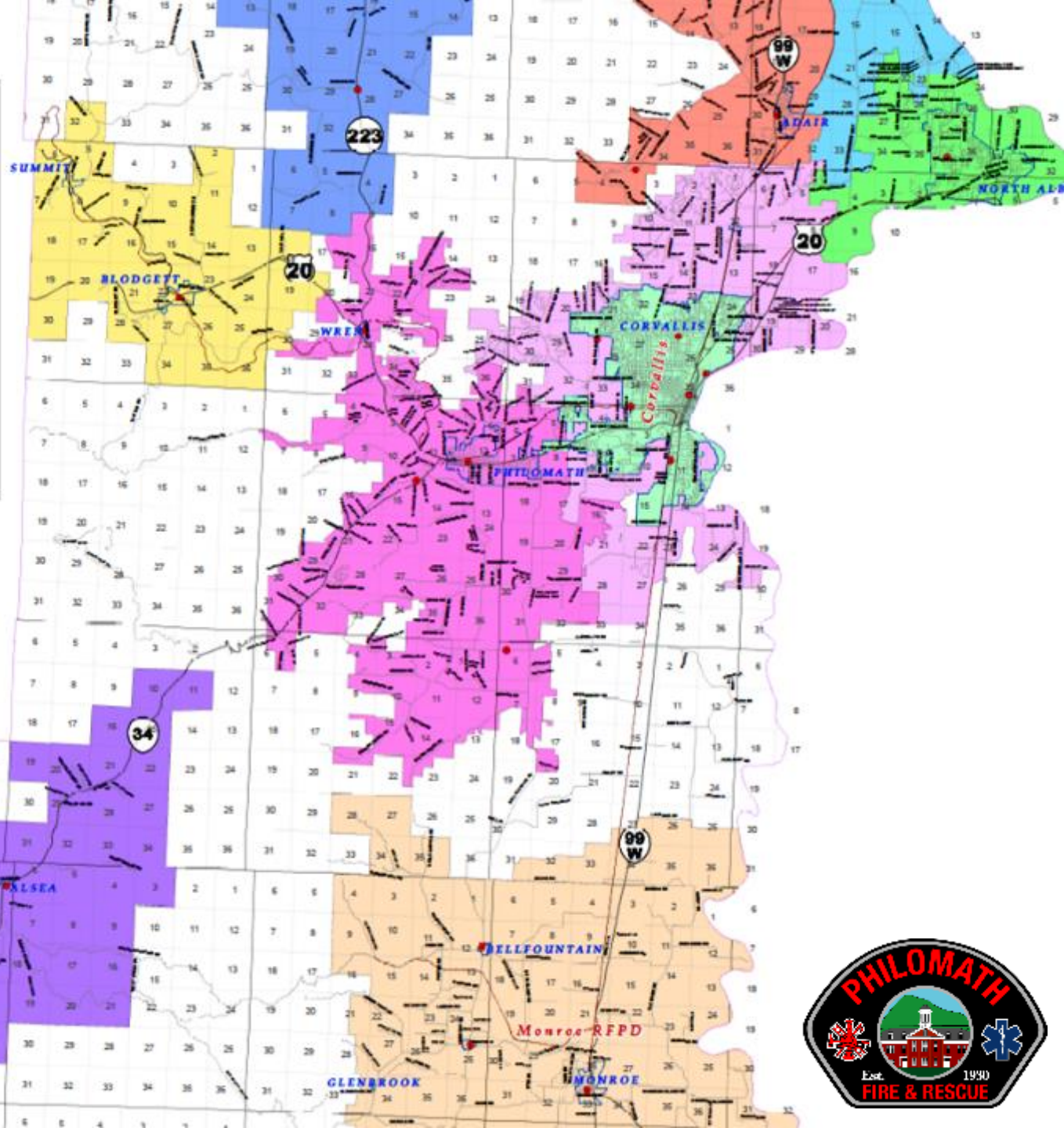
Albany

Blodgett-Summit

Corvallis

Hoskins-Kings Valley

Monroe



Who we are and what we do:



- 7 career staff and 40+ volunteer fire and EMS responders
 - City began buying firefighting equipment around 1906
 - Established in 1930 as volunteer force and City Department
 - First paid member was Fire Chief Bob Morgan
 - Became a Fire District in 1985 with elected Board of Directors
 - Funded by property taxes
 - All paid staff are members of the Philomath community

Who we are and what we do:



Advisory Panels

- Emergency Medical Advisory Committee, Hospital Preparedness Program, EMS Coordinators, 9-1-1 Users, Natural Hazards Mitigation Plan, County Wildfire Protection Plan, Benton County Forestland Classification Committee, Linn-Benton Fire Training Council, Benton County Charter Review, Linn-Benton Fire Defense Board, Oregon Fire Instructors Association

Regional/State

- Incident Management Team, Search & Rescue, Disaster Medical Assistance Team

Community Involvement

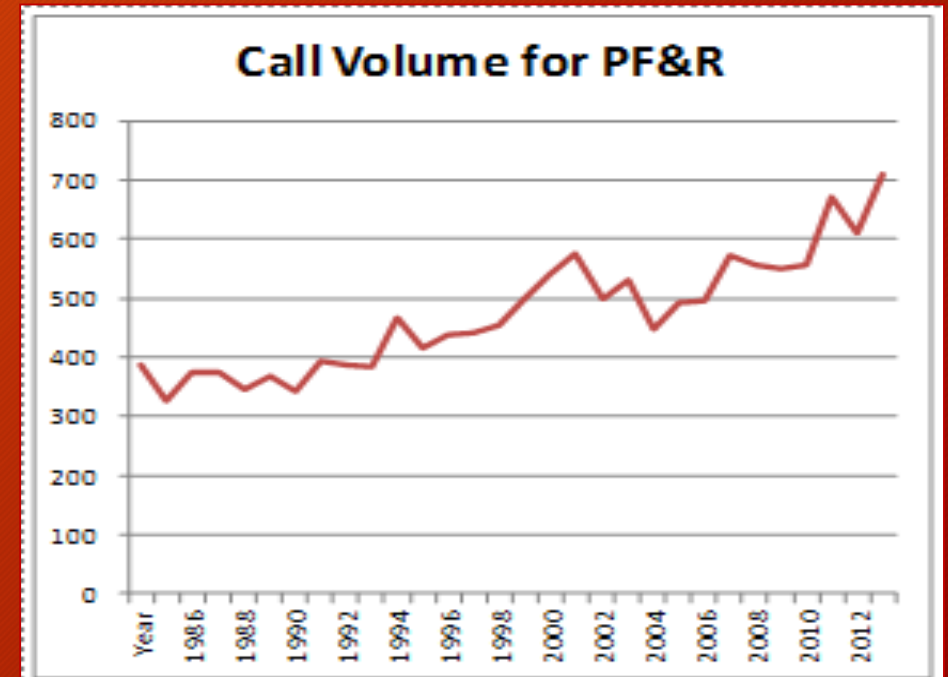
- Scholarships, sponsor community events, Holiday Cheer, Sr. Project mentor

Wildland/Urban Interface Education & Planning

We need some help:



- Call volumes increased
 - From 1977 to 2014 call volume increased by over 800%
- Population increase
 - From 1980 to 2014 population increased by 72.5%
 - 1980 - City population = 2,673
 - 2014 - City population = 4,610
- Volunteers remain Static
 - 1981 - 41 Volunteers
 - 2015 - 42 Volunteers



Changing Leadership:



• Officers Profile Through the Years

November 2001	11 Officers	3 Staff	<u>8 Volunteers</u>
April 2003	9 Officers	3 Staff	6 Volunteers
January 2005	9 Officers	3 Staff	6 Volunteers
March 2008*	7 Officers	3 Staff	4 Volunteers
April 2010	8 Officers	4 Staff	4 Volunteers
March 2012	9 Officers	6 Staff	3 Volunteers
September 2014	8 Officers	6 Staff	<u>2 Volunteers</u>

*Hiring of three staff firefighters

We need some help:



- Aging apparatus - fire trucks, rescue vehicles
 - 5 vehicles have already outlived their “Useful Life”
 - Not as reliable
 - Breaking down more frequently
 - Recent repair costs (\$43k maintenance)
 - Vehicles unavailable for weeks at a time due to being in the shop or out of order



1982 Grumman 95' Aerial

We need some help:



- Emergency equipment needs replacing

Heart Monitors	2017	\$ 72,000
SCBA's	2021	\$344,000
Hydraulic Tools	2018	\$ 88,000
Portable Radios	2018	\$ 70,200
Turnouts	Annual	\$ 25K-36K
Tires	Ten year total	\$120,000



We need some help:



- **Outgrown facilities**

 - Facilities Condition Assessment

 - Building originally built in 1976 to accommodate one full time Fire Chief

 - Need additional space for staff and volunteers

 - Training/Community room that is not ADA compliant

- **No increase in taxes since 1992**

 - Manage current expenses without carrying any debt

 - Applying for grants - \$1.9M over last 15 years

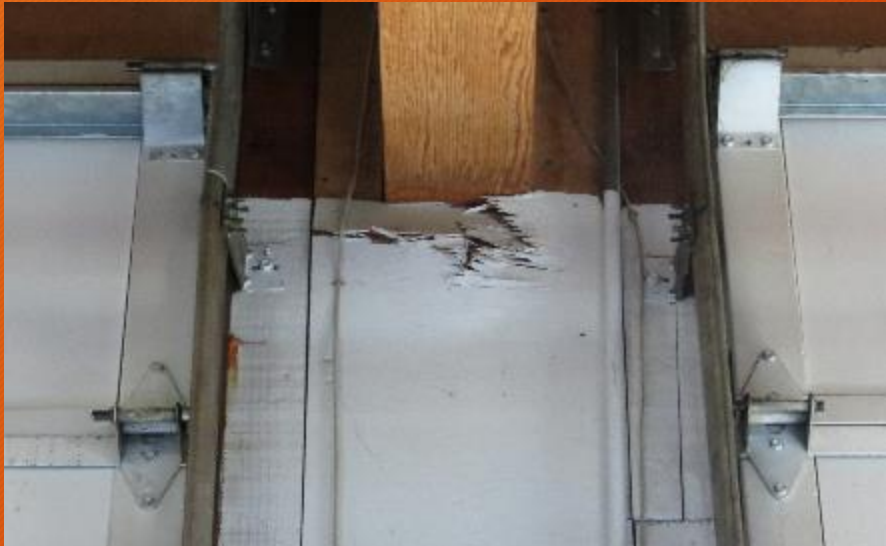
 - Current funding insufficient

We have a plan:

- Philomath Fire & Rescue adopted the new Master Plan in January of 2015
 - Developed by Fire Board and community members, this document is a summary of our plan for success for the next 15 years.
 - Master Plan identifies 6 major areas:
 - Apparatus - update fleet, add 2 response-capable staff vehicles
 - Equipment - replace and upgrade out-dated equipment
 - Facilities - improve and expand facilities to meet changing needs
 - Staffing - increase staff and volunteers, fund volunteer incentive program, recruitment
 - Programs - expand community programs, actively promote disaster preparedness
 - Funding - current tax rate inadequate for plan elements

We have a plan:

- \$3.5 million bond over 10 years
 - Apparatus
 - Equipment
 - Facility Improvement



10 Year Bond Measure Breakdown:



Apparatus

Replace Apparatus	\$ 1,374,000
New Apparatus	\$ 90,000

Equipment

Replace/Update	\$ 1,199,630
----------------	--------------

Facilities

New Addition	\$ 400,000
Remodel 201	\$ 250,000

Total	\$ 3,408,630
--------------	---------------------



Bond Measure Calculated Impact:



- Average Assessed Value
 - Philomath Fire District \$ 166,093
- Monthly Tax Increase for an average homeowner
 - Philomath Fire District \$ 6.92
- \$3.5 million - this would be the maximum amount
 - Authority to borrow up to \$3.5 million
 - Only borrow what we need. If we can replace apparatus/equipment with a grant, we wouldn't need to borrow - cost would be lower

